



SEL-5010 Host ID and License Activation

SEL-5010 Host ID

The following process describes how to obtain the Host ID for SEL-5010 Relay Assistant Software. The Host ID can be used in conjunction with the Activation ID to generate a license file.

- Step 1. Install and launch the SEL-5010 software.
- Step 2. Select **Help > About** to open the About window and view the Host ID. The Host ID is in the hexadecimal format (SEL=XX-XX-XX-XX-XX-XX-XX-XX) for which zeros (but not letter Os) are permissible. Use this format when entering the Host ID in the Customer Portal.

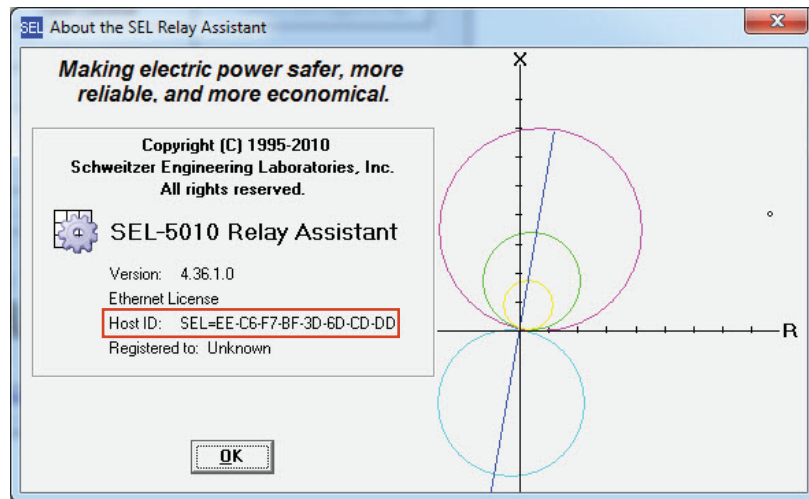


Figure 1 Host ID in the About Window

License Generation

When you have a Host ID that you can use in conjunction with the Activation ID to generate a license, follow the instructions on the SEL website (selinc.com/products/software/licensing-information/) to complete the license generation process.

SEL-5010 License Activation

The following process describes how to activate the SEL5010.lic license file for SEL-5010 software.

Step 1. Place the license file in the following directory:

C:\Program Files\SEL\SEL5010\

Or if you have a 64-bit PC, place the file in the following directory:

C:\Program Files (x86)\SEL\SEL5010\

Note that the locations in *Step 1* are for default installations. If the application is installed in a different path, the license needs to be placed in that location.

Step 2. After the file is in the correct directory, restart the SEL-5010 software. Select **Help > About** to see details about your license.

Technical Support

We appreciate your interest in SEL products and services. If you have questions or comments, please contact us at:

Schweitzer Engineering Laboratories, Inc.
2350 NE Hopkins Court
Pullman, WA 99163-5603 U.S.A.
Tel: +1.509.338.3838
Fax: +1.509.332.7990
Internet: selinc.com/support
Email: info@selinc.com or PCSW@selinc.com

© 2019 by Schweitzer Engineering Laboratories, Inc. All rights reserved.

All brand or product names appearing in this document are the trademark or registered trademark of their respective holders. No SEL trademarks may be used without written permission.

SEL products appearing in this document may be covered by U.S. and Foreign patents. Schweitzer Engineering Laboratories, Inc. reserves all rights and benefits afforded under federal and international copyright and patent laws in its products, including without limitation software, firmware, and documentation.

The information in this document is provided for informational use only and is subject to change without notice. Schweitzer Engineering Laboratories, Inc. has approved only the English language document.

SCHWEITZER ENGINEERING LABORATORIES, INC.

2350 NE Hopkins Court • Pullman, WA 99163-5603 U.S.A.
Tel: +1.509.332.1890 • Fax: +1.509.332.7990
selinc.com • info@selinc.com

