



# TEAM Host ID and License Activation

## TEAM Host ID

The following process describes how to obtain the Host ID for ACSELERATOR TEAM® SEL-5045 Software. The Host ID can be used in conjunction with the Activation ID to generate a license file. Note that this method applies to version 1.25.0.0 and later of TEAM. For assistance with a previous version, contact PC Software at PCSW@selinc.com.

- Step 1. After you have installed the compatible versions for ACSELERATOR QuickSet® SEL-5030 Software and TEAM, launch QuickSet and select **Device Manager** on the main screen to log in (by default, the password can be left blank).

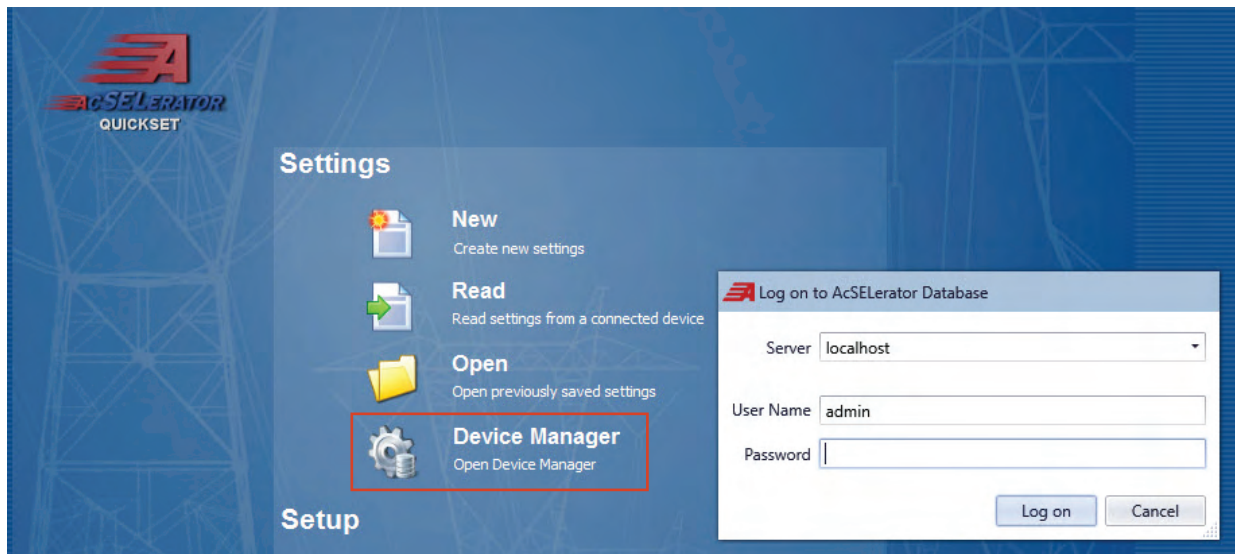


Figure 1 QuickSet Login

- Step 2. Once you have logged in, locate the Connection Explorer and double-click the **TEAM** node. In the Licensing tab, you will see the Machine Host ID that you need to generate a new license file. The Host ID is in the hexadecimal format (SEL=XX-XX-XX-XX-XX-XX-XX) for which zeros (but not letter Os) are permissible. Use this format when entering the Host ID in the Customer Portal.

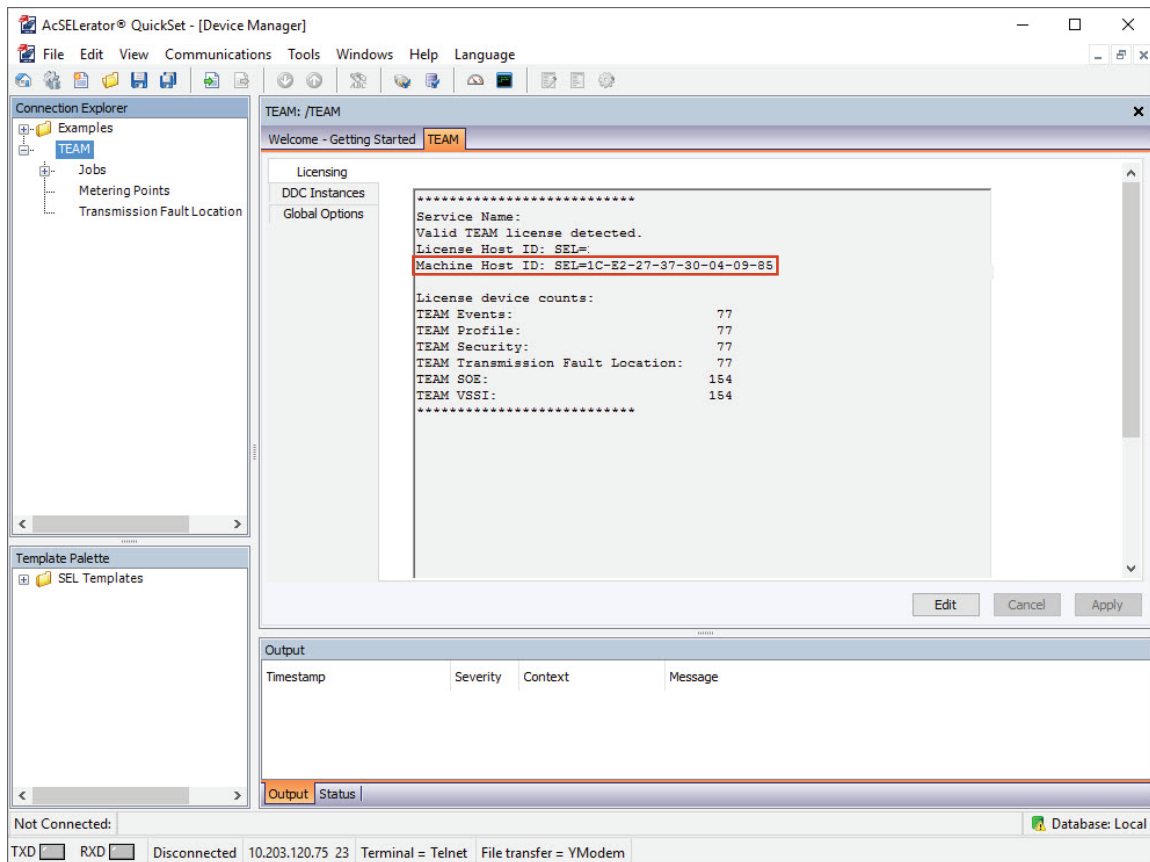


Figure 2 Machine Host ID

## License Generation

When you have a Host ID that you can use in conjunction with the Activation ID to generate a license, follow the instructions on the SEL website ([selinc.com/products/software/licensing-information/](http://selinc.com/products/software/licensing-information/)) to complete the license generation process.

## TEAM License Activation

The following process describes how to activate the DDC.lic license file for TEAM.

Step 1. Place the license file in the following directory:

C:\ProgramFiles\SEL\AcSElerator\TEAM\DCC\bin\

Or, if you have a 64-bit PC, place the file in the following directory:

C:\Program Files (x86)\SEL\AcSElerator\TEAM\DCC\bin\

Note that the locations in *Step 1* are for default installations. If the application is installed on a different path, the license needs to be placed in that location.

Step 2. After the file is in the correct directory, either restart the computer or stop the AcSElerator TEAM DDC service in the Windows Services, and start the AcSElerator TEAM DDC service again.

Step 3. Log in to QuickSet and select **Device Manager**.

Step 4. Double-click the **TEAM** node from within the Connection Explorer to view the license activated on the Licensing tab.

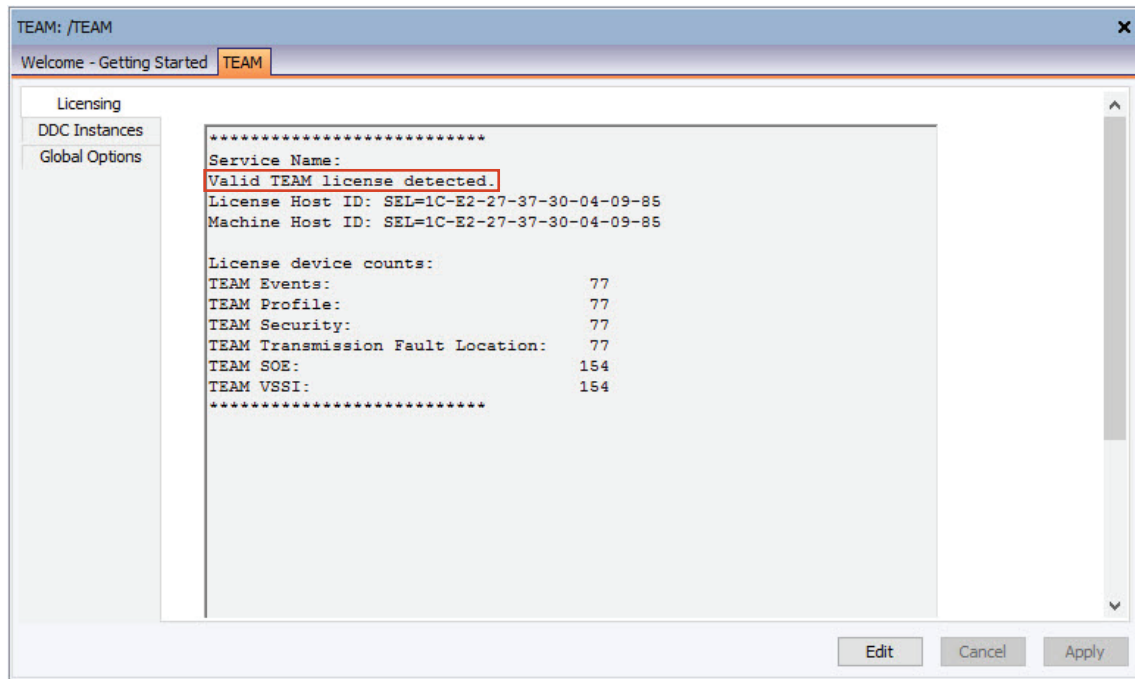


Figure 3 Activated Team License

Step 5. If you had the TEAM node open before loading the license, close the tab and reopen it to see the new information on the Licensing tab.

## Technical Support

We appreciate your interest in SEL products and services. If you have questions or comments, please contact us at:

Schweitzer Engineering Laboratories, Inc.  
 2350 NE Hopkins Court  
 Pullman, WA 99163-5603 U.S.A.  
 Tel: +1.509.338.3838  
 Fax: +1.509.332.7990  
 Internet: [selinc.com/support](http://selinc.com/support)  
 Email: [info@selinc.com](mailto:info@selinc.com) or [PCSW@selinc.com](mailto:PCSW@selinc.com)

---

© 2019 by Schweitzer Engineering Laboratories, Inc. All rights reserved.

All brand or product names appearing in this document are the trademark or registered trademark of their respective holders. No SEL trademarks may be used without written permission.

SEL products appearing in this document may be covered by U.S. and Foreign patents. Schweitzer Engineering Laboratories, Inc. reserves all rights and benefits afforded under federal and international copyright and patent laws in its products, including without limitation software, firmware, and documentation.

The information in this document is provided for informational use only and is subject to change without notice. Schweitzer Engineering Laboratories, Inc. has approved only the English language document.

**SCHWEITZER ENGINEERING LABORATORIES, INC.**

2350 NE Hopkins Court • Pullman, WA 99163-5603 U.S.A.

Tel: +1.509.332.1890 • Fax: +1.509.332.7990

selinc.com • info@selinc.com

