



SYNCHROWAVE PDC Host ID and License Activation

SYNCHROWAVE PDC Host ID

The following process describes how to obtain the Host ID for SEL-5073 SYNCHROWAVE[®] Phasor Data Concentrator (PDC) Software. The Host ID can be used in conjunction with the Activation ID to generate a license file.

- Step 1. Install SYNCHROWAVE PDC.
- Step 2. Click **Start > SEL Applications > Start SEL-5073** (see *Figure 1*). A message similar to *Figure 2* appears with the Host ID. The Host ID is in the hexadecimal format (SEL=XX-XX-XX-XX-XX-XX-XX-XX) for which zeros (but not letter Os) are permissible. Use this format when entering the Host ID in the Customer Portal.

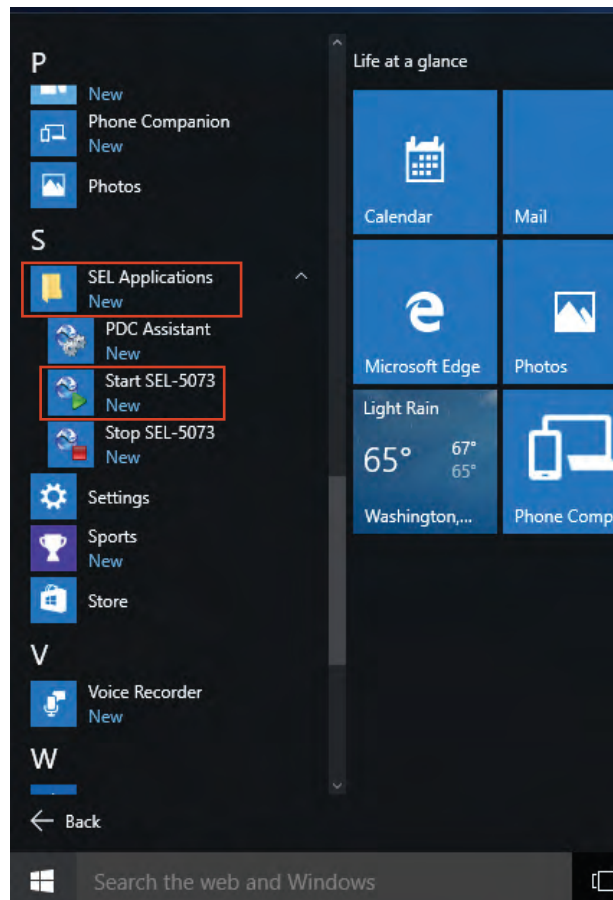


Figure 1 Launch SYNCHROWAVE PDC

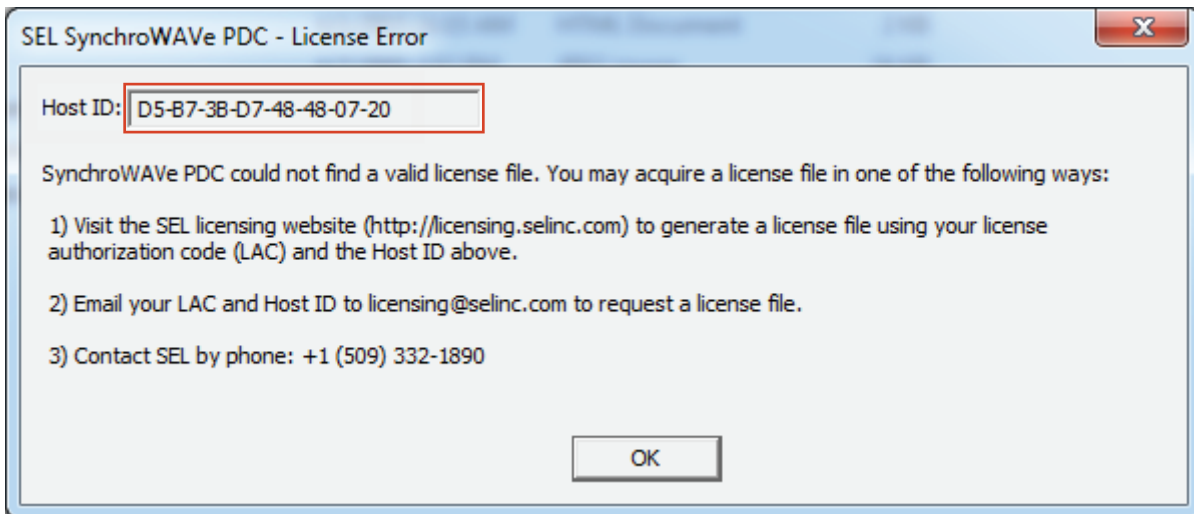


Figure 2 Host ID

License Generation

When you have a Host ID that you can use in conjunction with the Activation ID to generate a license, follow the instructions of the License & Delivery Portal Help document on the SEL website (selinc.com/products/software/licensing-information/) to complete the license generation process.

SYNCHROWAVE PDC License Activation

The following process describes how to activate the SEL5073.lic license file for SYNCHROWAVE PDC.

- Step 1. Download the license file to a location on your computer that you can easily access.
- Step 2. Place the license file in the following location:
 C:\Program Files\SEL\SEL5073\
 or if you have a 64-bit PC, place the file in the following location:
 C:\Program Files (x86)\SEL\SEL5073\
- Step 3. Start the SYNCHROWAVE PDC software to see that the software is licensed.

Technical Support

We appreciate your interest in SEL products and services. If you have questions or comments, please contact us at:

Schweitzer Engineering Laboratories, Inc.
2350 NE Hopkins Court
Pullman, WA 99163-5603 U.S.A.
Tel: +1.509.338.3838
Fax: +1.509.332.7990
Internet: selinc.com/support
Email: info@selinc.com or PCSW@selinc.com

© 2019 by Schweitzer Engineering Laboratories, Inc. All rights reserved.

All brand or product names appearing in this document are the trademark or registered trademark of their respective holders. No SEL trademarks may be used without written permission.

SEL products appearing in this document may be covered by U.S. and Foreign patents. Schweitzer Engineering Laboratories, Inc. reserves all rights and benefits afforded under federal and international copyright and patent laws in its products, including without limitation software, firmware, and documentation.

The information in this document is provided for informational use only and is subject to change without notice. Schweitzer Engineering Laboratories, Inc. has approved only the English language document.

SCHWEITZER ENGINEERING LABORATORIES, INC.

2350 NE Hopkins Court • Pullman, WA 99163-5603 U.S.A.

Tel: +1.509.332.1890 • Fax: +1.509.332.7990

selinc.com • info@selinc.com

