



Meter Reports Host ID and License Activation

Meter Reports Host ID

The following process describes how to obtain the Host ID for ACCELERATOR[®] Meter Reports SEL-5630 Software. The Host ID can be used in conjunction with the Activation ID to generate a license file.

- Step 1. Install and launch Meter Reports. If Meter Reports is installed on the same machine as TEAM, select a connection option from the Select a Data Source window shown in *Figure 1*.
- Step 2. Select **Connect to Data Source**.

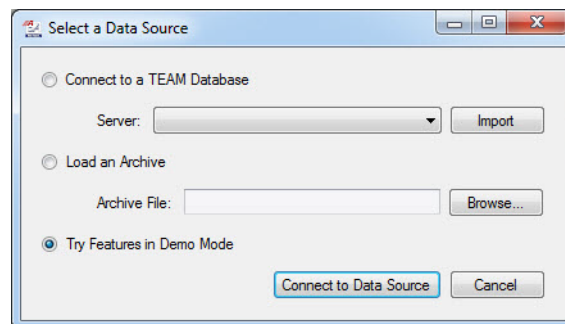


Figure 1 Connection Options

- Step 3. Once connected to a source, select **Help > Licensing**. In the License Details window that appears, you will find the Host ID. The Host ID is in the hexadecimal format (SEL=XX-XX-XX-XX-XX-XX-XX-XX) for which zeros (but not letter Os) are permissible. Use this format when entering the information in the Customer Portal.

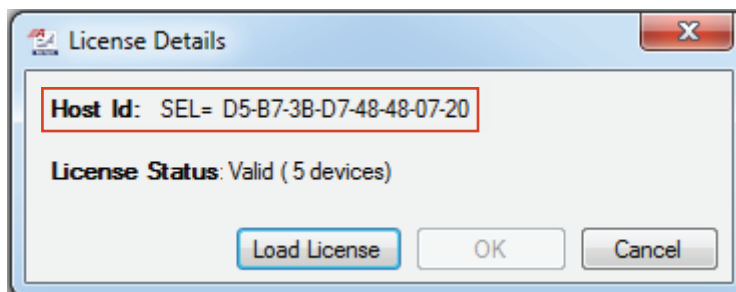


Figure 2 Host ID

License Generation

When you have a Host ID that you can use in conjunction with the Activation ID to generate a license, follow the instructions on the SEL website (selinc.com/products/software/licensing-information/) to complete the license generation process.

Meter Reports License Activation

The following process describes how to activate the SEL5630.lic license file for Meter Reports:

- Step 1. Launch Meter Reports. If Meter Reports is installed on the same machine as TEAM, select a connection option from the Select a Data Source window shown in *Figure 1*.
- Step 2. Select **Help > Licensing**.
- Step 3. In the License Details window that appears, select **Load License**.

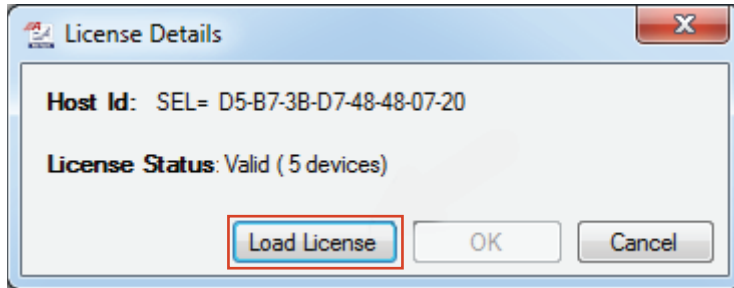


Figure 3 Load License

- Step 4. Locate the license file SEL5630.lic, select it, and select **Open**. Then you will see the status for your license in the License Status field.

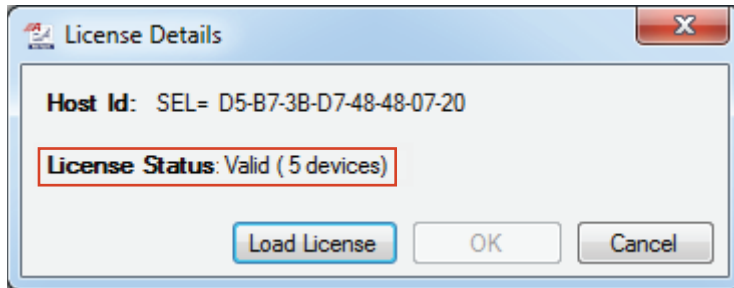


Figure 4 License Status

Technical Support

We appreciate your interest in SEL products and services. If you have questions or comments, please contact us at:

Schweitzer Engineering Laboratories, Inc.
2350 NE Hopkins Court
Pullman, WA 99163-5603 U.S.A.
Tel: +1.509.338.3838
Fax: +1.509.332.7990
Internet: selinc.com/support
Email: info@selinc.com or PCSW@selinc.com

© 2019 by Schweitzer Engineering Laboratories, Inc. All rights reserved.

All brand or product names appearing in this document are the trademark or registered trademark of their respective holders. No SEL trademarks may be used without written permission.

SEL products appearing in this document may be covered by U.S. and Foreign patents. Schweitzer Engineering Laboratories, Inc. reserves all rights and benefits afforded under federal and international copyright and patent laws in its products, including without limitation software, firmware, and documentation.

The information in this document is provided for informational use only and is subject to change without notice. Schweitzer Engineering Laboratories, Inc. has approved only the English language document.

SCHWEITZER ENGINEERING LABORATORIES, INC.

2350 NE Hopkins Court • Pullman, WA 99163-5603 U.S.A.

Tel: +1.509.332.1890 • Fax: +1.509.332.7990

selinc.com • info@selinc.com

