



SEL-2924/SEL-2925 Quick-Start Guide

Pairing a PC to the SEL-2924/SEL-2925

- Step 1. Connect the BLUETOOTH[®] adapter to a computer or power supply USB Standard-A jack using the supplied USB cable. Wait until the BLUETOOTH[®] LED is flashing.

On the SEL-2924, you can switch **PWR** to ON without connecting external power. The **PWR** switch must be ON to charge the batteries.

WARNING

Only use rechargeable AAA NiMH batteries in the SEL-2924. Use of incorrect batteries could result in battery damage or explosion.

- Step 2. Enable BLUETOOTH on your PC and initiate a search for the BLUETOOTH device.

For Microsoft[®] Windows[®] 7, look under **Devices and Printers** and click **Add a device**.

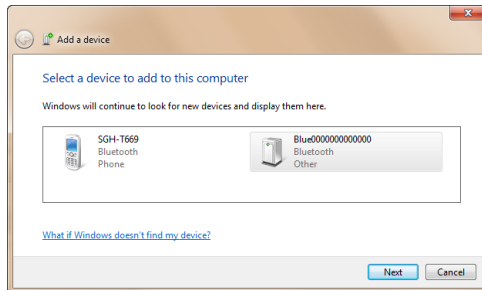


Figure 1 Pairing a BLUETOOTH Device

- Step 3. The PC should find the device with the name **BLUE(serial number)**, which should match the serial number found on the back of the BLUETOOTH device (see *Figure 1*).
- Step 4. Once you select the device, enter the device pairing code (PIN). The default PIN is **2924** for the SEL-2924 and **2925** for the SEL-2925.

Connecting to the SEL-2924/SEL-2925

- Step 1. After successfully pairing with the device, the PC creates a virtual COM port for the device (see *Figure 2*).

Under **Devices and Printers**, double-click the newly paired device labeled **BLUE(serial number)** to get the COM port number highlighted in *Figure 2*.

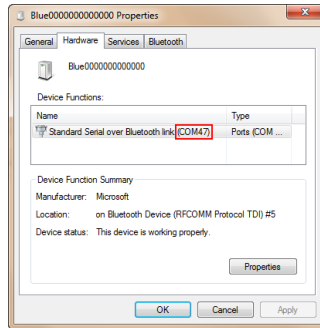


Figure 2 BLUETOOTH COM Properties

NOTE: If you are using ACSELERATOR QuickSet® SEL-5030 Software to set or change the PIN, you must uncheck the boxes shown in *Figure 3*, found under **Tools > Options > Communications**. You must first uncheck **Enable Advanced Communication Settings** in order to uncheck **Auto-Detect Connection**.

- Step 2. Open a terminal program and connect to the designated COM port shown in *Figure 2*.

The default settings of the SEL-2924/SEL-2925 are 9600 bps, 8 data bits, no parity, and 1 stop bit. The terminal program and end device settings must all match for communication to work.

NOTE: If you are using ACSELERATOR QuickSet, you need to check **SEL Bluetooth Device** in the ACSELERATOR QuickSet **Communication Parameters** Serial tab and set the SEL-2924/SEL-2925 Control Switch 1 to ON.

- Step 3. The SEL-2924/SEL-2925 BLUETOOTH LED should be illuminated to show that the link is connected.

At this point, the SEL-2924 process is complete. For the SEL-2925, you *must* change the default PIN to enable the serial port. Go to *Securing the Wireless Channel* for instructions on changing the pin.

Go to www.selinc.com to download the complete instruction manual.

Securing the Wireless Channel

- Step 1. After successfully pairing, set Control Switch 1 on the SEL-2924/SEL-2925 to ON to access the command mode.
- Step 2. Open a terminal window on your PC and connect to the COM port designated for the SEL-2924/SEL-2925.

NOTE: If you are using ACSELERATOR QuickSet to set or change the pin, you must uncheck the boxes shown in Figure 3, found under **Tools > Options > Communications**.

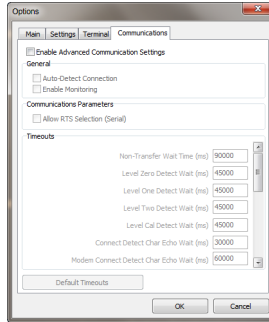


Figure 3 Uncheck Options

- Step 3. On the terminal window, type `$$$`. You will see a reply of `CMD` to let you know that you entered the command mode.

NOTE: You must issue `$$$` within 10 seconds of connecting to the port. If unsuccessful, disconnect/connect the terminal window to reset the 10-second timer.

- Step 4. Change the default PIN by entering `ATPIN,New Pin <Enter>`. The new pin must be 8–16 characters.

If the PIN is accepted, the device will reply with `OK`, please reconnect. Otherwise it will return with `ERROR`.

NOTE: If you are using ACSELERATOR QuickSet, you must exit the program, restart, then reconnect to make Step 5-Step 6 work properly.

- Step 5. After changing the PIN, the SEL-2924/SEL-2925 will reboot. You must disconnect, then reconnect the terminal window to gain access.
- Step 6. When you try to reconnect, the PC will prompt you to allow the connection, as shown in Figure 4. Enter the PIN you set in Step 4.

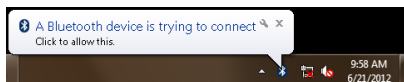


Figure 4 Changing PIN Prompt

- Step 7. Once the SEL-2924/SEL-2925 PIN is set, all other PCs can use the new PIN to pair with the device.

Regulatory Approvals

FCC Part 15.247; ICES-001; RSS-210

This device complies with Part 15 of the FCC rules. Operation is subject to the following two conditions:

1. This device may not cause harmful interference, and
2. This device must accept any interference received, including interference that may cause undesired operation.

FCC Part 15, Class B; ICES-003

NOTE: This equipment has been tested and found to comply with the limits for a Class B digital device, pursuant to part 15 of the FCC Rules. These limits are designed to provide reasonable protection against harmful interference in a residential installation. This equipment generates, uses and can radiate radio frequency energy and, if not installed and used in accordance with the instructions, may cause harmful interference to radio communications. However, there is no guarantee that interference will not occur in a particular installation. If this equipment does cause harmful interference to radio or television reception, which can be determined by turning the equipment off and on, the user is encouraged to try to correct the interference by one or more of the following measures:

- Reorient or relocate the receiving antenna.
- Increase the separation between the equipment and receiver.
- Connect the equipment into an outlet on a circuit different from that to which the receiver is connected.
- Consult the dealer or an experienced radio/TV technician for help.

Modifications not expressly approved by the manufacturer could void the user's authority to operate the equipment under FCC rules.

FCC Section 15.21

Users manual for an intentional or unintentional radiator shall caution the user that changes or modifications not expressly approved by the party responsible for compliance could void the user's authority to operate the equipment.

COFETEL Certification

Número de certificado: México RCPSESE12-1242

Marca: SEL, Modelo: SEL 2924

Número de certificado: México RCPSESE12-1243

Marca: SEL, Modelo: SEL 2925

© 2012-2013 by Schweitzer Engineering Laboratories, Inc.
All rights reserved.

All trademarks are the property of their respective holders. SEL products appearing in this document may be covered by U.S. and Foreign patents. The information in this document is provided for informational use only and is subject to change without notice.

The BLUETOOTH® word mark and logos are registered trademarks owned by Bluetooth SIG, Inc. and any use of such marks by SEL is under license.

This product is covered by the standard SEL 10-year warranty. For warranty details, visit www.selinc.com or contact your customer service representative.

