

## SEL-2664S Stator Ground Protection Relay

- Standard With Universal AC/DC Power Supply<sup>(1)</sup>
- Dual 100BASE-FX MM LC Ethernet
- Multimode ST<sup>®</sup> Fiber-Optic Serial Port
- 2 EIA-232 Serial Ports
- 2 Self-Wetted Inputs
- 4 Standard Contact Outputs (1-Form C, 3-Form A)
- 8 Target LEDs
- IRIG-B Time Code Input
- Target Reset Button
- Conformal Coating
- ACSELERATOR QuickSet<sup>®</sup> SEL-5030 Software
- Protection Includes 64S, 59N, and 64F (with external SEL-2664 Field Ground Module connected)
- Protocols
  - SEL ASCII and Compressed ASCII
  - SEL File Transfer
  - SEL Fast Meter, Fast Operate, FAST SER
  - SEL MIRRORING BITS<sup>®</sup> Communications
  - DNP3 Serial, DNP3 LAN/WAN
  - Modbus RTU, Modbus TCP/IP
  - IEC 61850
  - SNMP, Telnet, Ping, FTP
- UL Approved

Note: Please make sure to order a core balance CT (CBCT) from the accessories (Related parts) along with the SEL-2664S. Order an SEL part number 915900352 (CBCT with 500:1 ratio) if the grounding resistor is on the primary, **see Figure A for application diagram**. Order an SEL part number 915900286 (CBCT with 1000:1 ratio) if the grounding resistor is on the neutral grounding transformer (NGT) secondary, **see Figure B or C for application diagram**.

Part Number: 

2	6	6	4	S		1	X	X	8	3
---	---	---	---	---	--	---	---	---	---	---

### Mounting

Standard (Wall Mount)	0	
Panel Mount*	1	
Panel Mount with Rack Mount Adapter Plate*	2	

### Communications

Standard	X	X	8	3
----------	---	---	---	---

### Accessories

Fanox CT-1/80-41070, 500:1 Ratio, 50 A Max, 3.14" Diameter. Use when the grounding resistor is on the primary.*	9 1 5 9 0 0 3 5 2
Allen Bradley 193-CBCT3, 1000:1 Ratio, 180 A Max, 2.50" Diameter. Use when the grounding resistor is on the NGT secondary.*	9 1 5 9 0 0 2 8 6
Additional Calibration and Shunt Resistor Kit for SEL-2664S <sup>(2)*</sup>	9 1 5 9 0 0 5 1 7
SEL-2664S Mounting Conversion Kit*	9 1 5 9 0 0 3 1 0
SEL-C222 EIA-232 Serial Cable, SEL Relay to DCE Device (25-Pin Female) (configurable length)*	Please see Online MOT or contact SEL REP or CSR for ordering information.
SEL-C227A EIA-232 Serial Cable, SEL Relay to DTE Device (25-Pin Female) (configurable length)*	Please see Online MOT or contact SEL REP or CSR for ordering information.
SEL-C234 EIA-232 Serial Cable, SEL Relay to DTE Device (9-Pin Female) (configurable length)*	Please see Online MOT or contact SEL REP or CSR for ordering information.
SEL-C272 EIA-232 Serial Cable, SEL Relay to SEL Communications Processor (without IRIG-B signal) (configurable length)*	Please see Online MOT or contact SEL REP or CSR for ordering information.
SEL-C273 EIA-232 Serial Cable, SEL Relay to SEL Communications Processor (with IRIG-B signal) (configurable length)*	Please see Online MOT or contact SEL REP or CSR for ordering information.
SEL-C805 Multimode Fiber-Optic Cable, 200 Micron Core Diameter (configurable length)*	Please see Online MOT or contact SEL REP or CSR for ordering information.
SEL-C807 Multimode Fiber-Optic Cable with ST connectors, 62.5 Micron Core Diameter (configurable length)*	Please see Online MOT or contact SEL REP or CSR for ordering information.
SEL-C808 Multimode Fiber-Optic Cable*	Please see Online MOT or contact SEL REP or CSR for ordering information.

\* Additional Cost

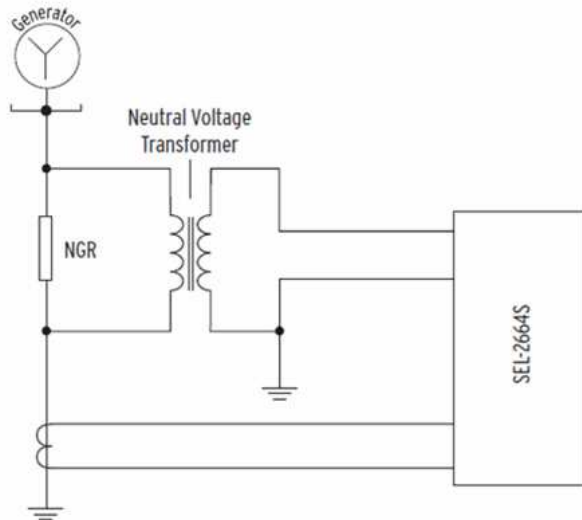
<sup>(1)</sup> Universal power supply nominal input voltage range: 125/250 Vdc; 120/240 Vac.

<sup>(2)</sup> The SEL-2664S comes standard with one calibration and shunt resistor kit.

NOTE: The SEL-2664S comes standard with a CD manual. One printed instruction manual is available upon request with each product purchased.

Refer to online MOT for the SEL-2664 Field Ground Module for ordering information. For fiber-optic connections between the SEL-2664 and SEL-2664S, please see online MOT(s) for SEL-C805 or SEL-C807 Multimode Fiber-Optic cable.

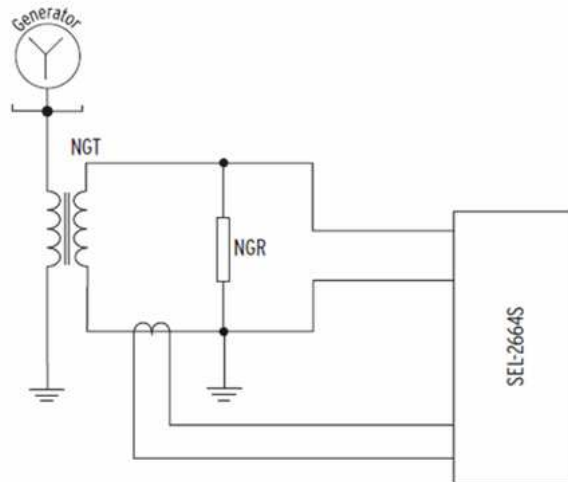
Figure A



Order SEL part number 915900352 (CBCT with 500:1 ratio)

AC Connections With CBCT on the Primary Side

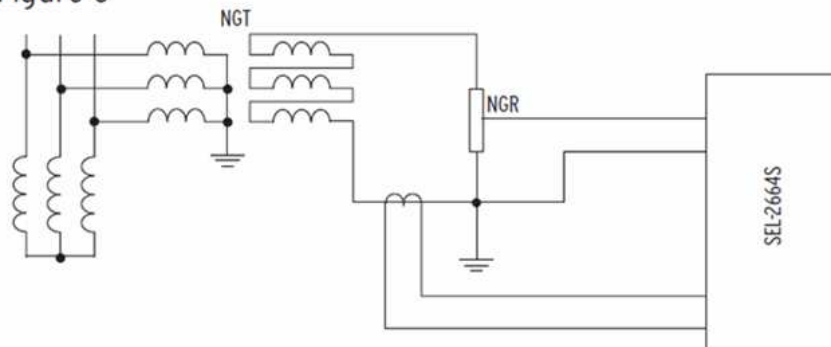
Figure B



Order SEL part number 915900286 (CBCT with 1000:1 ratio)

AC Connections With CBCT on the Secondary Side of the Neutral Grounding Transformer

Figure C



Order SEL part number 915900286 (CBCT with 1000:1 ratio)

*Making Electric Power Safer, More Reliable, and More Economical®*

**SEL** SCHWEITZER ENGINEERING LABORATORIES, INC.

2350 NE Hopkins Court - Pullman, WA 99163 USA  
Phone: +1.509.332.1890 - Fax: +1.509.332.7990